

# Sage Accpac

## Sage Accpac Integrated Suite

Improve Productivity. Streamline Operations. Increase Visibility.



sage



# Sage Accpac Integrated Suite

## Sage Accpac Version 5.6

As the world of business is constantly evolving, so must your business management software. At Sage, we work to continually improve your experience with Sage Accpac Integrated Suite and develop new functionality to help you get more out of your solution. We work directly with our extensive customer base (over 45,000 companies and 200,000 users) to ensure our products work the way you do to improve processes and enhance productivity. Over the past year, over 5,000 customers and partners worldwide have been consulted through on-site visits, surveys, interviews, and observational studies in our state-of-the-art usability laboratories. The results of this rigorous research are poured into the product development process to help us design and build better software.

The key enhancements developed in Version 5.6 will help to automate workflow and reduce costs throughout your organization, helping you accomplish more in less time. How you can get your hands on all of the dynamic new features packed into this version? Great news! You are entitled to software upgrades and maintenance updates as part of your Sage Cover plan. Need to renew your plan? Simply contact us at +65 6336 6118 today.

	08-Jan			08-Feb			08-Mar		
	Actual	Budget	Variance	Actual	Budget	Variance	Actual	Budget	Variance
<b>Revenue</b>	<b>296 516.05</b>	<b>350 500.00</b>	<b>(53 983.95)</b>	<b>357 062.15</b>	<b>380 000.00</b>	<b>(22 937.85)</b>	<b>396 896.00</b>	<b>420 000.00</b>	<b>(23 104.00)</b>
Sales	296 516.05	350 500.00	(53 983.95)	357 062.15	380 000.00	(22 937.85)	396 896.00	420 000.00	(23 104.00)
<b>Cost of Sales</b>	<b>177 290.32</b>	<b>180 000.00</b>	<b>2 609.68</b>	<b>215 841.47</b>	<b>180 000.00</b>	<b>(35 841.47)</b>	<b>250 604.32</b>	<b>200 000.00</b>	<b>50 604.32</b>
Cost Variance	-	-	-	-	-	-	-	-	-
Cost of Sales	168 022.43	180 000.00	11 977.57	217 590.27	180 000.00	(37 590.27)	234 917.35	200 000.00	34 917.35
Inventory Adjustment	9 368.49	-	(9 368.49)	(1 748.80)	-	1 748.80	15 686.97	-	15 686.97
<b>GROSS PROFIT / (LOSS)</b>	<b>119 125.13</b>	<b>170 500.00</b>	<b>(51 374.87)</b>	<b>141 220.68</b>	<b>200 000.00</b>	<b>(58 779.32)</b>	<b>146 291.68</b>	<b>220 000.00</b>	<b>(73 708.32)</b>
<b>Overheads</b>	<b>70 207.72</b>	<b>105 475.00</b>	<b>35 267.28</b>	<b>92 041.00</b>	<b>88 375.00</b>	<b>(3 666.00)</b>	<b>73 651.10</b>	<b>84 000.00</b>	<b>10 348.90</b>
Legal Fees	-	2 400.00	2 400.00	-	-	-	-	-	-
Levies	-	400.00	400.00	-	4 000.00	4 000.00	-	4 000.00	-
Salaries and Wages	38 919.32	40 000.00	1 080.68	53 786.60	50 000.00	(3 786.60)	41 471.11	45 000.00	(3 528.89)
Skills Levies	-	200.00	200.00	421.87	200.00	(221.87)	-	-	-
Employee Training	-	1 200.00	1 200.00	-	-	-	-	-	-
Employee Recruitment	-	5 000.00	5 000.00	-	-	-	-	-	-
Plant Paid	9 646.00	10 000.00	354.00	4 823.00	6 000.00	1 177.00	5 718.15	6 000.00	(281.85)
Pleasurements	48.61	100.00	51.39	-	100.00	100.00	190.57	-	190.57
Repairs and Maintenance	217.57	500.00	282.43	-	-	-	-	-	-
Car Repairs and Maintenance	-	5 000.00	5 000.00	2 747.38	500.00	(2 247.38)	1 709.31	-	1 709.31
Car Installments	1 752.82	5 400.00	3 647.18	1 998.27	2 400.00	401.73	1 998.27	-	1 998.27

### BENEFITS

#### BETTER INSIGHT INTO YOUR BUSINESS

Increase insight into your business to realize your strategic vision! A new business intelligence tool enables you to adapt successfully to changes in today's markets and make better, faster decisions.

#### PROFICIENTLY MANAGE BANK SERVICES

Get a fast and accurate view of your cash position and better insight into cash flow with the improved usability and new functionality in System Manager Bank Services.

#### INCREASE PRODUCTIVITY

Now you have more ways than ever to accommodate your unique procedures and get your job done even more quickly.

#### STREAMLINE OPERATIONS

Boost profitability and cut costs by dynamically linking processes, information, workflows, and communication channels through improved SageCRM integration.

#### BETTER INVENTORY MANAGEMENT

Several enhancements assist you with inventory management—a key area for process improvements used to reduce costs that also result in better service—and greater customer satisfaction.

- New reporting tool provides access to Sage Accpac through a familiar Microsoft® Excel® interface.

"Product is well thought out, adds valuable features and performed great!"

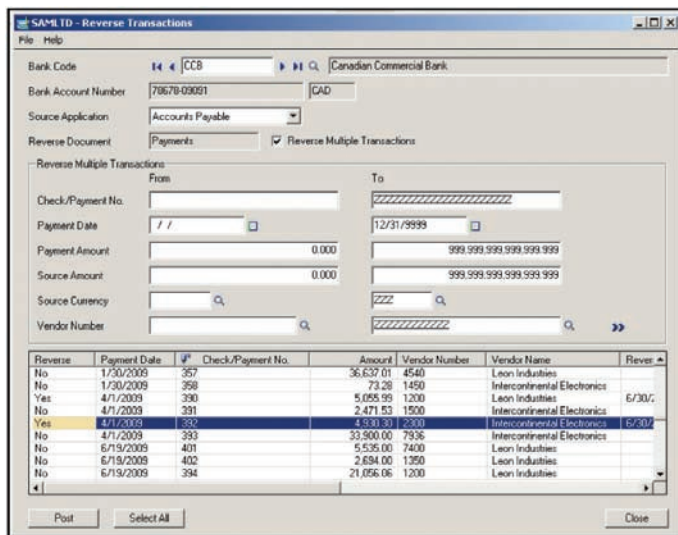
Ed McCarthy

### Better Insight into Your Business

Sage Accpac Intelligence—a new product within the Sage Accpac Integrated Suite—empowers you to quickly and easily obtain the information you need for operations and strategic planning from your Sage Accpac solution. Effortlessly create reports and analyze data, utilizing the familiar Microsoft Excel application. You can spend more time focusing on information analysis and interpretation and less time pulling the data together. Best of all, Version 5.6 provides you with the Sage Accpac Intelligence application at no additional cost, along with a single user license of the Report Manager.

### Proficiently Manage Bank Services

Version 5.6 empowers you with a more straightforward way to reconcile your accounts and finish month-end in record time. The new user interface simplifies the user experience and allows for greater flexibility and more efficient daily task management. Cash management processes are greatly improved. You can also take advantage of new functionality such as bank security resources for separation of duties, an improved reversal process, and a bank entries posting journal.



- A new Reverse Transactions form lets you reverse both payments and receipts quickly and accurately.

### Increase Productivity

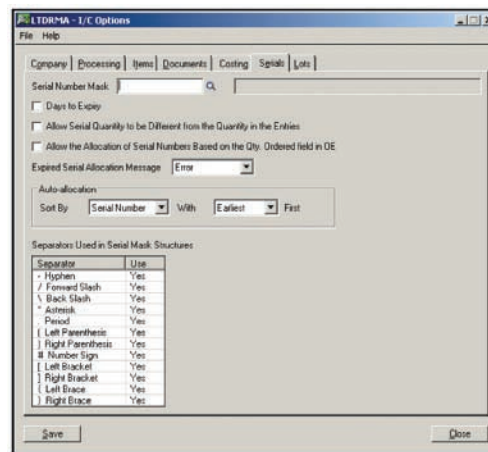
Optimized Reporting delivers faster access to critical information, as many of the reports that you utilize on a daily basis have been optimized and refreshed to incorporate many requests from our users. We have added global enhancements to reports that allow you to save parameters easily and quickly export reports into Microsoft Excel. In addition, you will be able to find important accounts receivable information efficiently with the better integrated AR Inquiry tool. Version 5.6 also delivers optimized, project costing, and the ability to run your software on virtualization platforms for cost-effective performance.

### Streamline Operations

A comprehensive CRM solution enables organizations to guarantee their sales and customer care professionals have access to critical data—regardless of whether or not they have an Internet connection. With Version 5.6, you can view and synchronize SageCRM data on the Solo client when integrated with Sage Accpac. As a result, Offline Synchronization simply makes your field sales, marketing, and service personnel more productive and efficient because they can work anytime, anywhere, irrespective of connectivity. You will also find many new menu items available directly from SageCRM along with other enhancements to this already comprehensive interface.

### Better Inventory Management

You will find many improvements to inventory management, including an optimized Inventory Valuation report, faster access to information, a new Internal Usage form, additional costing and transaction creation options, Item Inquiry and Drilldown functionality, and a new field to track posting dates for transactions. Version 5.6 also takes Serialized Inventory and Lot Tracking to the next level, as this functionality has been completely redesigned to improve workflow and performance and add customer-requested functionality.



- Improve workflow and performance, and access new functionality with built-in Serialized Inventory and Lot Tracking.



# Sage Accpac Integrated Suite

## Sage Accpac Intelligence

Sage Accpac Intelligence empowers you to quickly and easily obtain the information you need for operations and strategic planning from your Sage Accpac solution. Effortlessly create reports and analyze data, utilizing the familiar Microsoft® Excel® application. With Sage Accpac Intelligence you can spend more time focusing on information analysis and interpretation, and less time pulling the data together. You have the freedom to build your business intelligence solution to fit your business. Choose from:

### Report Manager Licenses\*

The Report Manager allows you to author new reports (organizing, creating, editing), as well as filter and aggregate data. This tool also allows you to set permissions and security for reports.

### Report Viewer Licenses

This tool provides you with basic editing capabilities (filtering and changing of parameters) and drill-down functionality on existing reports/templates. You can provide Report Viewer licenses to staff members who do not need to create new reports.

### Connector Module

The Connector Module further simplifies financial managers' day-to-day operational tasks, allowing access to the information they need from multiple sources and consolidation of data from multiple companies. The Connector Module allows for consolidations and connectivity to unlimited ODBC data sources.

### Analysis Module

Support business strategy and decision making through advanced analysis of trends and what-if scenarios. The Analysis Module lets you utilize built-in Microsoft Excel Pivot Tables to get insight into information that goes beyond transactional data. Use the Analysis Module to create OLAP cubes, which enable multidimensional analysis of your data.

## BENEFITS

### ACCESS BUSINESS-CRITICAL INFORMATION

Empower your staff with vital information when they need it! Sage Accpac puts critical information at your fingertips, improving collaboration and productivity.

### COMPLEX REPORTING MADE EASY

Seamless integration with Sage Accpac eliminates redundant data entry and automates your workflow, providing business intelligence in a familiar Microsoft Excel interface.

### INSIGHTFUL DECISIONS

Sophisticated, customizable dashboards transform your data into strategic decision-making intelligence that helps you effectively manage your business.

### RELY ON FLEXIBLE, POWERFUL ANALYSIS

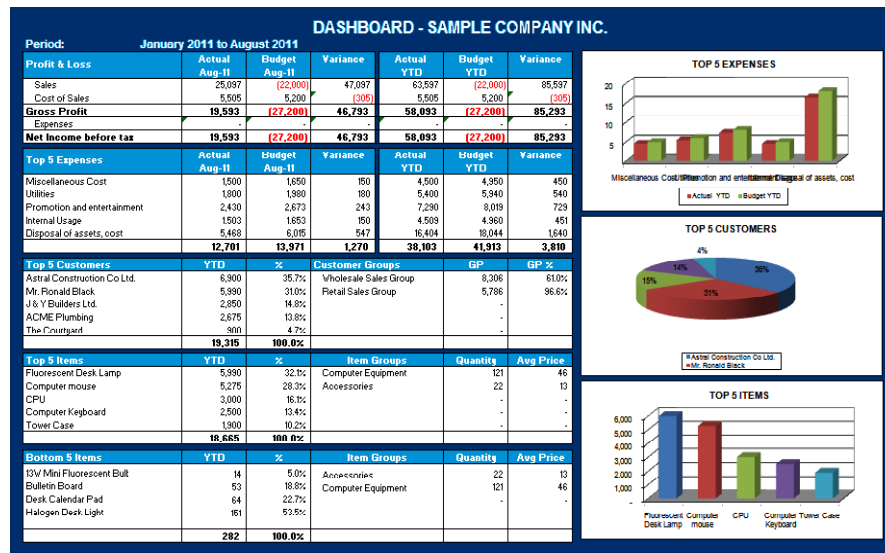
Quickly identify and respond to trends and abnormalities utilizing multidimensional analysis to perform what-if scenarios that go beyond transactional data.

### MULTINATIONAL AND MULTICOMPANY CAPABILITIES

Extensive multicurrency and multicompany capabilities give you the competitive edge to succeed in today's fast-paced global marketplace.

### SECURE BUSINESS INTEGRITY

Protect your most valuable asset—your data. The tight security of Sage Accpac ensures that your vital information is protected while providing reliable and accurate information.



\*Single-user license for Sage Accpac Intelligence Report Manager is included in Version 5.6, which also includes many prebuilt report templates.

Work smarter, every day! View your Comprehensive Sage Accpac Data in a familiar Microsoft Excel interface.

“Sage Accpac has given us a cohesive view of our organization. It’s an integrated ERP solution that delivers the data we need to run the business more effectively.”

Arshad Fazal  
General Accountant  
Norcast Castings Company

Discover the Sage Accpac difference! We provide **one unified solution** on which to build your business, enabling more efficient processing, more productive people, better management of your entire customer lifecycle, and the ability to gain real insight into your business. Sage Accpac ensures your business is built on a solid foundation, providing **superior architecture** that gives you the power you need today with the flexibility to adapt tomorrow. Reap the rewards of a **global reach** solution with the breadth of functionality to support multientity and multinational organizations, with the **local touch** needed for your business. Your new found freedom of choice and growth will be supported by a **collaborative ecosystem** ensuring success for the life of your business. And of course, with over 30 years supporting businesses just like yours, Sage Accpac is **proven, reliable, and experienced.**

## Features

### ACCESS BUSINESS-CRITICAL INFORMATION

Accurate, readily available, and intelligent information is imperative to driving daily business decisions. Unifying all of your data into one solution creates a true view of your business, which is vital to growth and profitability. Schedule reports to run during off-peak hours and distribute through e-mail for timely delivery no matter where recipients are located. With improved visibility into real-time information comes the ability to better manage exceptions and adjust quickly to meeting changing customer needs.

### COMPLEX REPORTING MADE EASY

Save time and get more accurate reports by eliminating redundant data entry efforts through direct integration with Sage Accpac Integrated Suite. By pulling information already in your system, Sage Accpac Intelligence automatically knows your fiscal periods, chart of accounts, detail transactions, and various types of balances. Sage Accpac Intelligence provides several standard report templates with your solution, so you can focus on interpreting information to make faster, better business decisions. Of course, you can also easily create new reports based on the included templates or from scratch utilizing the familiar interface of Microsoft Excel.

Templates include Financial Analysis Reports • Dashboard Analysis • General Ledger Transaction Details • Inventory Master • Purchase Master • Sales Master • Top 5 Customers • Top 5 Products • Top 5 Vendors

### INSIGHTFUL DECISIONS

The Dashboard Analysis report provides a one-page summary of key business information, featuring “Top N” details on customers, items, and expenses. View information both textually and graphically to help with daily and long-term planning. In addition, comparative Profit and Loss figures are displayed for both the current month and financial year-to-date figures. You can easily drill down to get further insight into the numbers. The bottom line—better, faster, and smarter decisions provide your organization with a significant competitive advantage.

### RELY ON FLEXIBLE, POWERFUL ANALYSIS

Support business strategy and decision making through advanced analysis of trends and what-if scenarios. The Analysis module allows you to utilize built-in Microsoft Excel Pivot Tables to get insight into information that goes beyond transactional data. You can create OLAP cubes, which enable multidimensional analysis of large volumes of data, and overcome Excel row limitations. However, there is no need to start from scratch, as purchasing the Analysis tool provides several reports, such as an Inventory, Sales and Financial cube.

### MULTINATIONAL AND MULTICOMPANY CAPABILITIES

Pounds. Pesos. Dollars. Francs. Yen. No matter what currency you trade or how many companies you run, Sage Accpac can empower your company for multientity and global enterprise. Sage Accpac Intelligence allows you to view your reports in multiple currencies to get a true picture of how international commerce is affecting your bottom line. You can also utilize the Connector module to view business intelligence for multiple Sage Accpac company databases, or any ODBC-compliant data source from our collaborative ecosystem, such as SageCRM, Sage Abra HRMS, or third-party solutions.

### SECURE BUSINESS INTEGRITY

Safe, secure, and controlled! Protect the sensitive information in your business. Sage Accpac assures comprehensive security at variable levels, protecting your important business intelligence from unauthorized access or manipulation.



## Sage Accpac Edition Differences

Feature	500 Version	200 Version	100 Version
Number of Companies	Unlimited	Unlimited	5
Number of Users	Unlimited users	Limited to 20 users	Limited to 10 users
Pervasive PSQL Version	Yes	Yes	Yes
Microsoft® SQL Server® Version	Yes	Yes	Yes
Oracle Version	Yes	Yes	Yes
Multicurrency	Yes	Yes	Yes
Transaction Analysis and Optional Field Creator	Yes	Yes	Yes
ACCPAC Alerts	Yes	Yes	Yes
<b>System Manager</b>			
SageCRM for Sage Accpac Server	Yes	Yes	Yes
Additional Language Overlays	Yes	Yes	Yes
<b>Financial Management</b>			
Integrated Dashboards	Yes	Yes	Yes
Accounts Receivable:			
Advance Credit Claims (Receipt Entry)	Yes	Yes	Yes
AR Inquiry	Yes	Yes	Yes
Customer Number Change	Yes	Yes	Yes
National Accounts Management	Yes	Yes	Yes
EFT Direct Receivables	Yes	Yes	Yes
Accounts Payable:			
Advance Credit Claims (Payment Entry)	Yes	Yes	Yes
Vendor Number Change	Yes	Yes	Yes
General Ledger:			
G/L Account Rollup	Yes	No	No
Number of Account Segments	10	4	3
Number of Account Structures	Unlimited	4	3
Number of Budgets	5	3	2
Years of History	99	7	7
User-defined Accounts Groups	Yes	Yes	Yes
G/L Security	Yes	Yes	Yes
Account Code Change	Yes	Yes	Yes
G/L Consolidations	Yes	Yes	Yes
Intercompany Transactions	Yes	Yes	Yes
Financial Link Professional	Yes	Yes	Yes

## Sage Accpac | Sage Accpac Edition Differences

Operations Management	500 Version	200 Version	100 Version
Inventory Control:			
Number of Item Segments	10	10	4
Multiple Levels of Bills of Material	Yes	Yes	Yes
Customer Item Numbers	Yes	No	No
Advanced Pricing			
Price by Unit of Measure	Yes	No	No
Price by Weight or Quantity	Yes	No	No
Price by a Cost Plus a Percentage or Amount	Yes	No	No
Below Cost or Sales Margin Price Checks	Yes	No	No
Item Number Change	Yes	Yes	Yes
Order Entry:			
Ops Inquiry	Yes	Yes	Yes
Return Merchandise Authorization	Yes	Yes	Yes
Purchase Orders:			
Vendor Contract Costs	Yes	Yes	Yes
Serialized Inventory and Lot Tracking	Yes	Yes	Yes
Uni-Sales Analysis	Yes	Yes	Yes
<b>Project and Job Costing</b>			
Time Cards	Yes	Yes	Yes
<b>Business Intelligence</b>			
Sage Accpac Insight	Yes	Yes	Yes
Sage Accpac Intelligence	Yes	Yes	Yes

# Sage Accpac

## Integrated Suite



### Real Companies—Real Solutions

Companies around the world use Sage Accpac ERP to manage nearly every aspect of their business. Sage Accpac Integrated Suite is a completely integrated, multinational business management solution built on the most flexible and expandable architecture available today. Cost-effective, quick to implement, and simple to use—Sage Accpac provides best-in-class solutions to automate workflow throughout your organization. A unified solution delivers enterprise-wide visibility, maximizing collaboration and providing insight for strategic decisions that drive revenue growth and improve profitability. Sage Accpac offers all the features you would expect from a powerful ERP solution, with additional features well suited for companies managing multiple businesses across country borders.

Challenge	Solution	Results
Lack of standardization constrained the quantity and quality of management information, making it difficult for Radisson to perform in-depth analysis or generate reports.	Sage Accpac ERP deployed online provides reliability, broad functionality, and secure accessibility, enabling Radisson to operate more efficiently.	Sage Accpac Online helps synchronize the hotel chain's diverse accounting practices without diluting its focus on customer-impact systems.
Clarke Phillips accounting and point-of-sale software was slow, provided financial and inventory data that was several days old, and did not make inventory viewable from other locations.	Sage Accpac ERP, for robust financial management, real-time sales, and inventory processing.	Order entry time cut in half; anticipated efficiencies will reduce inventory on hand by 20%, plus support 25% growth in sales without adding new staff.
As a chemical distributor, Inortech needed to speed up collections, enhance the tracking of customer information, improve sales processes, and minimize training time and related costs for new sales representatives.	Sage Accpac Integrated Suite provides sales and customer service representatives with easy Web-based access to comprehensive information about prospects, customers, and products.	Inortech has quicker, more reliable access to information; optimizes staff productivity and customer satisfaction; reduces training time; and closes more sales.
As a high tech company, Photoflex required a streamlined solution that could keep pace with its rapid growth and perform a variety of advanced accounting processes.	Vintage Business Systems implemented a comprehensive Sage Accpac Integrated Suite solution to help Photoflex quickly overcome their business challenges.	With Sage Accpac, Photoflex has instant access to key information for effectively tracking sales and inventory data, performing month-end closing, and creating and customizing reports.

"It was clear to us that Sage Accpac still leads the industry for functionality, features, performance, flexibility, ease of use, and cost-effectiveness."

Michel Ponzi  
Owner  
Ponzi Vineyards

## One Unified Solution

Accurate, readily available, and intelligent information is imperative to driving daily business decisions. Unifying all of your data into one solution creates a true view of your business, which is vital to growth and profitability. With improved visibility into real-time information comes the ability to manage exceptions better and adjust quickly to meeting changing customer needs. Implementing Sage Accpac Integrated Suite can result in:

- Unparalleled financial management that ensures accuracy of information, minimizes risks, and assists with compliance
- Enhanced collaboration and more control
- Reduced costs through streamlined operations and optimal staff performance
- More satisfied customers, making you more profitable, and maximized vendor relationships, saving you more money
- Better informed, faster decisions that provide a strategic advantage

## Superior Architecture

Freedom of Choice—Build your solution your way and leverage the ability to adapt quickly as your business requirements evolve. Your ERP solution should support your business strategy, not hinder it. Sage Accpac ERP is technically designed to provide your business with more control and flexibility. You can deploy all or part of the functions according to your requirements, one step at a time. Because the pace of your growth should be determined by only one person: You.

- Scalable editions support 1-250 users
- Deployment neutral: On-site or On-Demand (hosted) and easily move between the two
- Technology options: Database choices of Pervasive.SQL, Microsoft® SQL or Oracle; run your server on Windows or Linux; add modules and features as you grow

## Global Reach / Local Touch

- Competition is rapidly becoming a global challenge. An international presence is not only important for modern enterprises, it is essential. Empower your organization with the tools required to maintain international currency standards easily and eliminate the complexities of multinational commerce. The powerful capabilities of Sage Accpac allow you to capitalize on the global economy—giving you the power you need to easily support multiple entities (intercompany and consolidations), languages (by user), currencies (Recognized Gain/Loss or the Unrealized Gain/Loss Accounting Method), and so much more.

## Collaborative Ecosystem

A collaborative ecosystem helps our customers thrive. Becoming part of this ecosystem—which includes Sage staff, programs, and resources; a vibrant network of partners, consultants, and developers; authorized training facilities; and software user communities—enables you to get the most out of your investment. The core tenet of the Sage approach is that we provide customers with an unmatched range of expertise, support, training, collaboration, and innovation.

## Available Functionality and Capabilities

Accounts Payable • Accounts Receivable • Advanced Budgeting • Alerts • Bank Reconciliation • Business Intelligence • Check and Form Printing • CRM • Document Management • EDI • EFT • General Ledger • G/L Consolidations • Intercompany Transactions • Inventory Control • Language Translations • Manufacturing • Multi-Currency • Project and Job Cost • Return Material Authorization • Sales Analysis • Transaction Analysis and Optional Field Creator

**At Sage, we live and breathe business challenges and solutions that can deliver an extraordinary customer experience.**

Our range of business software and services is continually evolving with innovative solutions to answer our customers' needs. Simply put, we're passionate about making it easier for our customers to better manage unique requirements and successfully meet their business goals. To reach a higher level of performance and profitability, contact your local Sage business partner, or call us directly at +65 6336 6118.

# Sage Cover

## Your Protection in Mind

### About Sage Cover

We know how much you depend on your Sage Solution which is why we have made it easy for you to keep your system in top form with our software assurance plan, Sage Cover. The Sage Cover plan provides software updates, upgrades and information, giving you total investment protection in the long run. With Sage Cover, you do not need to worry about keeping up to date with the latest version because it will be made available to you automatically. Each new version includes features that help your team maximize their productivity and performance. And best of all, it cost significantly less on an annual basis than sporadically purchasing new software licenses.

### Benefits of Sage Cover

#### Save Money

Just a small percentage of your module SRP compared to buying new licenses of new version at full price. Why pay more for new version when you can have it with Sage Cover for less?

#### Save Time

You need not to manually watch out for new software versions. We, Sage and your Business Partner, will notify you on software updates and will make new versions readily available to you as soon as they are released.

#### Protect Against Price Increase

When SRP prices increase, you are already covered with Sage Cover. One year and discounted multi-year subscription terms allow you to choose the degree of price protection that is right for your business – and help simplify your budgeting.

#### Protect your investment

Because you are always running the most up-to-date software, you do not need to worry that your business-critical software may become obsolete.

#### Maximize productivity

Your software will be insured and protected at all times to ensure its efficiency. Thus increase the productivity of your operation.

#### Usage guidance

As Sage Cover subscribers you will be able to access SageTutor, a series of instructional videos. It will help you and your team gain maximum performance from your Sage software solution.

“We are indeed very satisfied with Sage Accpac, especially the inter-relationship between each module and its flexibility. It has exceeded all our expectations.”

Mr Terrence Wong, Director, Product Development and Operation, Astone Hong Kong Limited

“Sage Accpac has fulfilled all of our objectives in terms of financial reporting and our ever-expanding chart of accounts. With Sage Accpac business analysis tools, we are more confident than ever in our ability to make the best possible decisions for our company. With such a seamless conversion of our data and significant gains in productivity and efficiency, it is clear that Sage Accpac was the right choice for NAA.”

Steve Harfst, COO North American Airlines

“We are looking for a system to facilitate our financials and accounting, and for those reasons Accpac suits our requirement very well”

Koh Chun Yuan, Financial Controller, Super Coffeemix Manufacturing

## About Sage Asia

Sage Asia, a subsidiary of The Sage Group, plc, provides small-and-medium sized businesses with a broad range of end-to-end business management applications. Its easy-to-use, scalable and customizable applications enhance its customers' competitive advantage. Its products support accounting, operations, customer relationship management, and the specialized needs of accounting practices, distribution and manufacturing. Its portfolio of leading solutions include: Sage Accpac ERP, Sage CRM, Sage Saleslogix, ACT! by Sage, UBS, EasyPay and Sage ERP X3 among others. Sage's Asia network covers Singapore, Thailand, Malaysia, China, India, UAE, Saudi Arabia and other key cities in Southeast Asia.

For more information or to find out how the Sage Accpac Integrated Suite of applications can help your business, visit us at [www.sageasiapac.com](http://www.sageasiapac.com) or call +65 6336 6118 today.

End-to-end solutions | Expert advice | Premium Partner Support | That's Sage 360°.



sage

**Sage Software Asia Pte Ltd**

210 Middle Road,  
IOI Plaza #06-04  
Singapore 188994

Tel : +65 6336 6118  
Fax : +65 6339 6118

[www.sageasiapac.com](http://www.sageasiapac.com)